

The AUCKLAND ORIENTEER



AUGUST 1991

EDITORIAL



Hi Folks,

Welcome to the new editor, some will know me only by name. I'm Mervyn Paitry from Central "O" club, the scruffy unshaven raggedly untidy orienteer usually covered in mud with lots of scratches and usually some sort of injury at the end of the run.

I have taken over the responsibility of editor from Rowena Grenfell who has served the magazine well since September 1990 which I'm sure the club members appreciated.

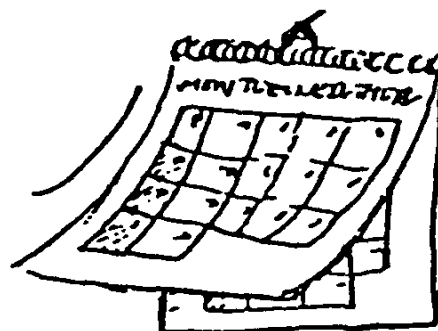
I have a word processor (Isn't that nice!). It's like having 3 to 4 sub-editors but I still appreciate the assistance of Rowena compiling this edition. Without her I think I would be running around in circles. A big thank you Rowena from myself and all club members. I don't think I will ever reach her expertise, but if all AOA members have patience with me I promise I will try, with possibly a little help from other experienced members.

Don't be frightened to criticise (constructive please). I'm only too willing to learn.

The deadline for the September edition is Tues 19th August. Please send the contributions to the new editor's address: 16 Korma Rd, Mt Roskill, Ak 6.

My phone number 659-709

Mervyn Paitry



COMING EVENTS

- | | | | |
|----|-----|------|---|
| 4 | SUN | WHO | OYS Phoebes Lake. NOTE Start times from 10.30am to 1.30pm withcourse closure at 2pm. From Dargaville head south to Te Koporu then on towards Pouto. |
| 11 | SUN | SA | Promotion event. Camp Adair, from Papakura take Hunua Gorge Rd. |
| 17 | SAT | CDOA | CDOA Individual Champs. Crater Block, North side of Lake Rerewhakaatu off SH38, 45Km from Rotorua. |
| 18 | SUN | CDOA | CDOA Short O Champs. Ngamotu, Rotorua. Details will be provided in the Start programme information to those who had entered it. |

25 SUN C Park event. Mangere Mountain.

SEPTEMBER

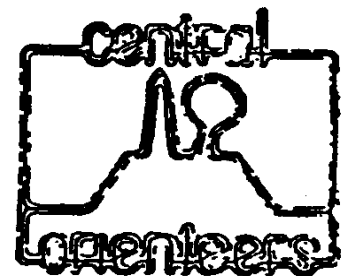
- 1 SUN SA OY6. Waiuku Forest. Follow signs to Forest from Waiuku then follow "O" signs to event.
- 8 SUN NW Promotion event. 16 Mile Woodhill Forest. Follow SH16 towards Helensville, turn left into Rimmers Road approx 7Km past the Forest HQ.
- 15 SUN Rot CDOA OY5. Crater Block. North side of Lake Rerewhakaatu off SH38, 45Km from Rotorua.
- 15 SUN C Farm event. Self's Farm, Papatoetoe.
- 29 SUN OY7 Paparoa, Woodhill Forest. take Rimmers Road off SH16 and follow "O" signs.

OCTOBER

- 6 SUN C Park event. Western Springs.
- 6 SUN Ham CDOA OY6. Sour Brothers. Turn into SH23 from Hamilton, head towards Raglan. 'O' sign will be posted from Whatawhata on SH23-allow approx 30mins to event from Whatawhata.
- 13 SUN NW Auckland Champs. Waterfall
- 20 SUN SA Auckland Relay Champs. Redoubt Rd-this map is now unavailable, more details will follow in the next edition on the new event site.
- 26/28 SAT/MON Hawkes Bay NZ Champs

For all Auckland events you can start any time from 10am to 12.30pm. Central Districts club events vary from area to area but their OY's have start times from 11am to 1pm.

THE CENTRAL SPY REPORT



- * A great big welcome is extended to our newest members Bryce & Gareth Davies; Anna, Davies; Anna, Claire & Janet Macky; Anna, David & Philippa Newton; and Mark Roberts (ex Hutt Valley). Mark is not one who likes to be idle and even though he has only been in Auckland about a fortnight he has already been drawing up maps of Auckland schools for Kiwisport. 'Great stuff Mark'.
- * Rumour had it that 3 of our members sneaked away and competed in the Rotorua Marathon a month or two back. Diligent sleuthing has now revealed all. Rudi Hlawatsch did a very good time for a first effort - 3hr 06m 19s. Kevin Wilson running his 5th marathon - 2nd at Rotorua - was determined to break 4 hours this time, however in

spite of a last minute sprint Kevin found himself just 7 seconds outside. "Never mind Kev, I'm sure you will break 4 hours next time". The other runner (he reckons he is just a jogger!) was John Everett who had planned to run 5.5 minute kilometers to achieve his target time of 3hrs 51m. John, captivated by the occasion, found that he reached half way in just 10minutes! Poor John was later to suffer a penalty for that fast start. However in spite of being reduced to a walk in the later stages he almost exactly achieved his target time when he finished in 3hr 52m."Well done the three of you".

- * Ex-member Jill Clendon is in America this month. Jill has been ski instructing or something similar during the American winter and at last report (July) was O' mapping in North Carolina.
- * Eddie Reddish and Rudi Hlawatsch attended an Orienteering Mapping seminar held at Flock House (near Bulls) at the end of June. 39 mappers and cartographers attended a very interesting "Oh, thats how you do that" meeting. Many techniques were demonstrated and the mainly self-taught cartographers went away with many new techniques to try out on their next maps. Various mapping conventions were agreed to and from now on you will see standardisation on how single trees, stumps, logs, troughs, watertanks etc are displayed on your maps. Also you should not see any more farmland or open land maps with that horrible 100% yellow. Central and Taupo clubs were to the fore in recommending that NZ should differ from IOF standards in this matter because of the harshness of light received particularly hard to read when printed over the 100% yellow.
- * Next month's committee meeting will be held at Tom and Heather Clendon's place (18a Irirangi Road, One Tree Hill) on 7th August starting also at 7.30pm. September's meeting will be on the 4th September at 56 Allens Road, East Tamaki. Look for the O' flag marking the venue. Easy access from the Otara motorway offramp. Same old start time of 7.30pm. Everyone is invited to attend.
- * News is still slow coming in. If anyone has any boasting, info or gossip that they would like published in the Auckland Orienteer would they please contact THE SPY (messages may be left at Ph 576-9147).

The Spy

NORTH WEST NEWS

- # Most of you will know that our club has been conducting a North Harbour Schools Competition this year. Everyone who finishes a course receives a point for their school with place getters earning more. Quite a few schools expressed interest, but when it came to actually making the effort to encourage their pupils to take part, very few bothered. However at this stage Orewa College has a healthy lead over Rangitoto with only one more event to go.
- # We also have a number of club members involved with one to one coaching this year. Some of the partnerships are going really well



**NORTH WEST
ORIENTEERING CLUB**

but a few others are experiencing hiccups. Hopefully, as we gradually get more organised the system will prove helpful to those taking part.

We also have a number of club members involved with one to one coaching this year. Some of the partnerships are going really well but a few others are experiencing hiccups. Hopefully, as we gradually get more organised the system will prove helpful to those taking part.

Well done all you junior North Westers on your selection in the AOA under 21 team to compete at the CDOA Champs this month. Great to see newcomer Phillip Goss making the M19's and Chris Ambler staging a comeback. Other North West members are Charlotte Hood, Marit Moen, Kirsten Ambler, Sasha Middleton, Brenda Stone, Alison Stone, Peter Ambler, David O'Brien and Christen Abrahamsson.

Katie Fettes has been competing in Europe lately. One mistake at a Swiss event saw her having to relocate by climbing 20 contours out of a valley. I'm sure most of us can identify with that. Apparently the gullies were so steep that most competitors were quite scared and reluctant to go down into them. But the German 5 Day was completely different with flatter terrain. Katie won the womens's elite (she won at least three of the days) and recorded a kilometre rate of 6.1mins. WOW!

This month John Fettes leaves New Zealand for an indefinite stay overseas. John has been a club member since the 1970's and has done his share of course setting, controlling and other tasks willingly. We shall miss you John and good luck for the future.

It's that time again to think about the Club Champs. This year they will be held in conjunction with OY6 at Waiuku Forest on Sunday Sept 1st. Make sure you take part and be in to win one of the club's trophies.

DJ DAZZY JEFF AND THE FRESH PRINCE'S SOUTH AUCKLAND GOSSIP CORNER

North West Newshounds



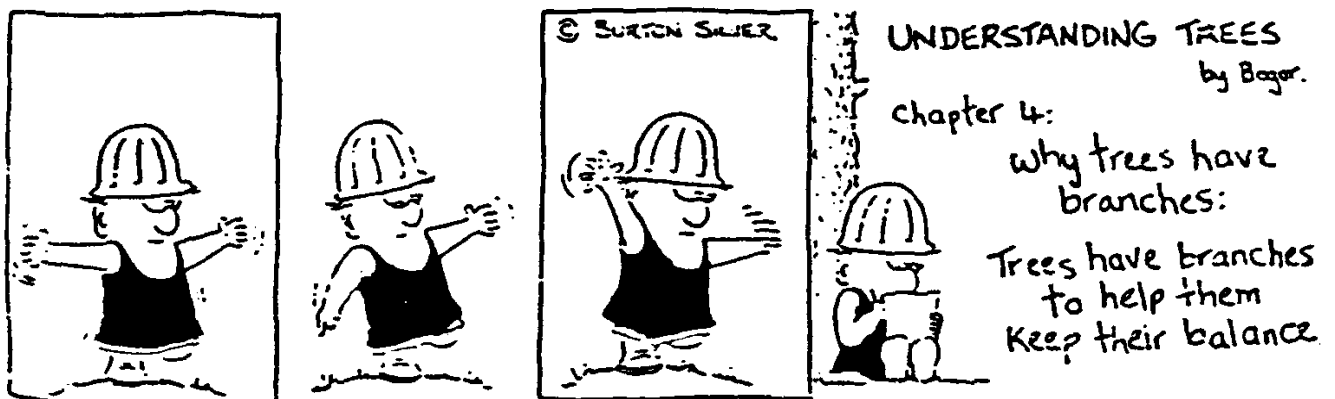
@ Any members who want a booklet of the new IOF control descriptions and mapping symbols at cost of printing, ring the "Head Cheese" (Unni) or see her at events.

Also any members who want to read copies of "Australian Orienteer" and "Compass Sport" (British), ring the "Head Cheese" (Unni). These items are very useful to the average orienteer and I recommend that every household should have one.

@ Some results via fax from our special wonder Tania at the Junior Champs in Berlin. She came 5th in a short 'O', 1½ minutes from the winner and 30th in the individual (she didn't do so well in this one because she was overcome by heat, excuses, excuses). These two events were added together to give her a final ranking of 14th. Now that's pretty good.

- @ We would like to congratulate Barbara Batty, Bryce Brighthouse, Daniel Steven, Tony Tremain, Rachel Shuker and Ineke Currie on their selection to represent Auckland at the CDOA Champs in mid August. We're sure they will do the club proud.
- @ The September meeting is at the Robinsons on Monday the 2nd. We would like a big turnout because Val's loved ones are away and she's feeling very lonely, so if a lot of people turn up the moral support will help her.
- @ Ken and Jeanne did a great job at Waiuku recently. You couldn't miss them slaving away making sure the event was mishap free. The fruits of their efforts paid off with a really fine day and great courses which helped everyone to enjoy themselves. Well, everyone except Rob Pols, who injured his patella tendon jumping over a Taranaki gate which incidently was in a stupid place. We all hope you get better soon Rob and see you at our next Waiuku Forest event (OY6).
- @ Volunteers are needed to help with a New Year's eve party for European orienteers en route to the Veterans World Champs. This party is being organised by Mr Rager, John and Val Robinson (phone Val)
- @ To finish on a lighter note. It was recently Rolf Boswell's and Mark's Currie's birthdays (Rolf's on 31 July and Mark's on 22 July) and we're sure they are open to late presents hint hint. Also young Rachel Shuker was selected to represent Waiuku at netball.
- @ All information for SA news should be sent to Daniel (294-8181) or Tony (298-3797) which will enable you to learn Rolf and Mark's age. "Ta Ta till next month"

DJ Jazzy Jeff and the Fresh Prince



LETTERS TO THE EDITOR



Dear Editor,

OY 4 WOODCOCKS

I am not one to normally complain about course setting and controlling, but the OY 4 event at Woodcocks on 7 July would have to be the worst that I have competed (endured) (survived) in during 15 years of orienteering.

It is the first time that I have finished an event (albeit almost on my knees) muttering dire threats about the setter and controller (who ever they may be-obviously someone very inexperienced in controlling). Admittedly Woodcocks is a steep map, but why set courses straight up the steepest hills offering no route choice or navigation challenge.

This would have been the best way to put off not only newcomers, but also experienced orienteers, from our sport. In my book, a good course is not only a physical test, but a test of orienteering skills- navigating, route choice, contouring and pace counting etc.

The final straw at OY 4 which made no sense was the leg to the finish from the last control - uphill again - totally unnecessary, leaving a long walk back to the parking. At least that was downhill.

When we left the event it appeared that 50% of the elite men had DNF'd- what sort of result is that? Wake up course setters, we want to encourage people to stay in our sport, not drive them away.

Tom Clendon M55B or should that be "C"?

TIMES SQUARE

	OY3 WOODCOCKS 7/7/91
	COURSE 6
	PETER GODFERY M45A
S - MM	4.08
MM - 1	19.33
1 - 2	17.03
2 - 3	12.59
3 - 4	7.56
4 - 5	8.39
5 - 6	8.07
6 - 7	4.44
7 - F	2.02
TOTAL	85.11

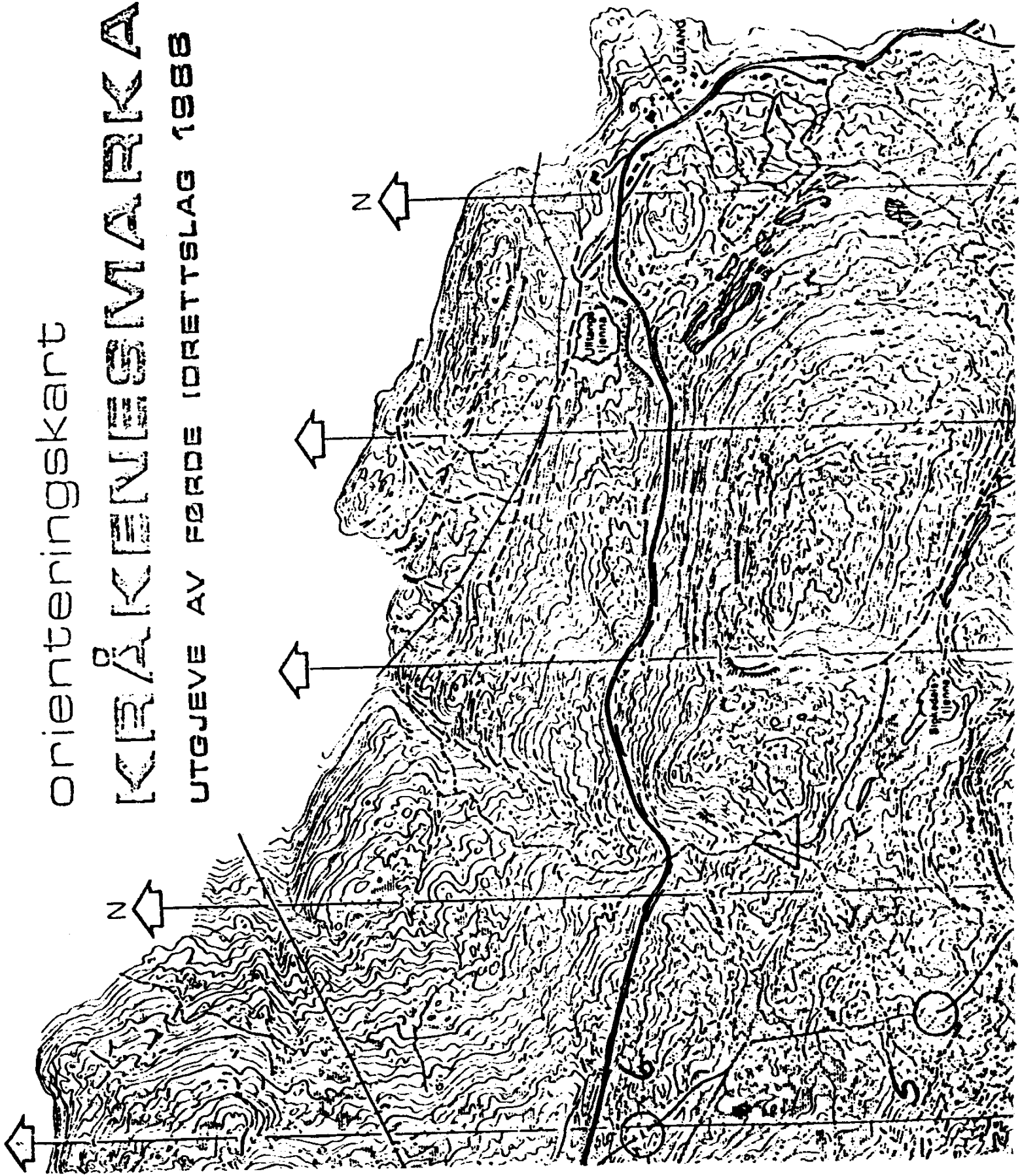


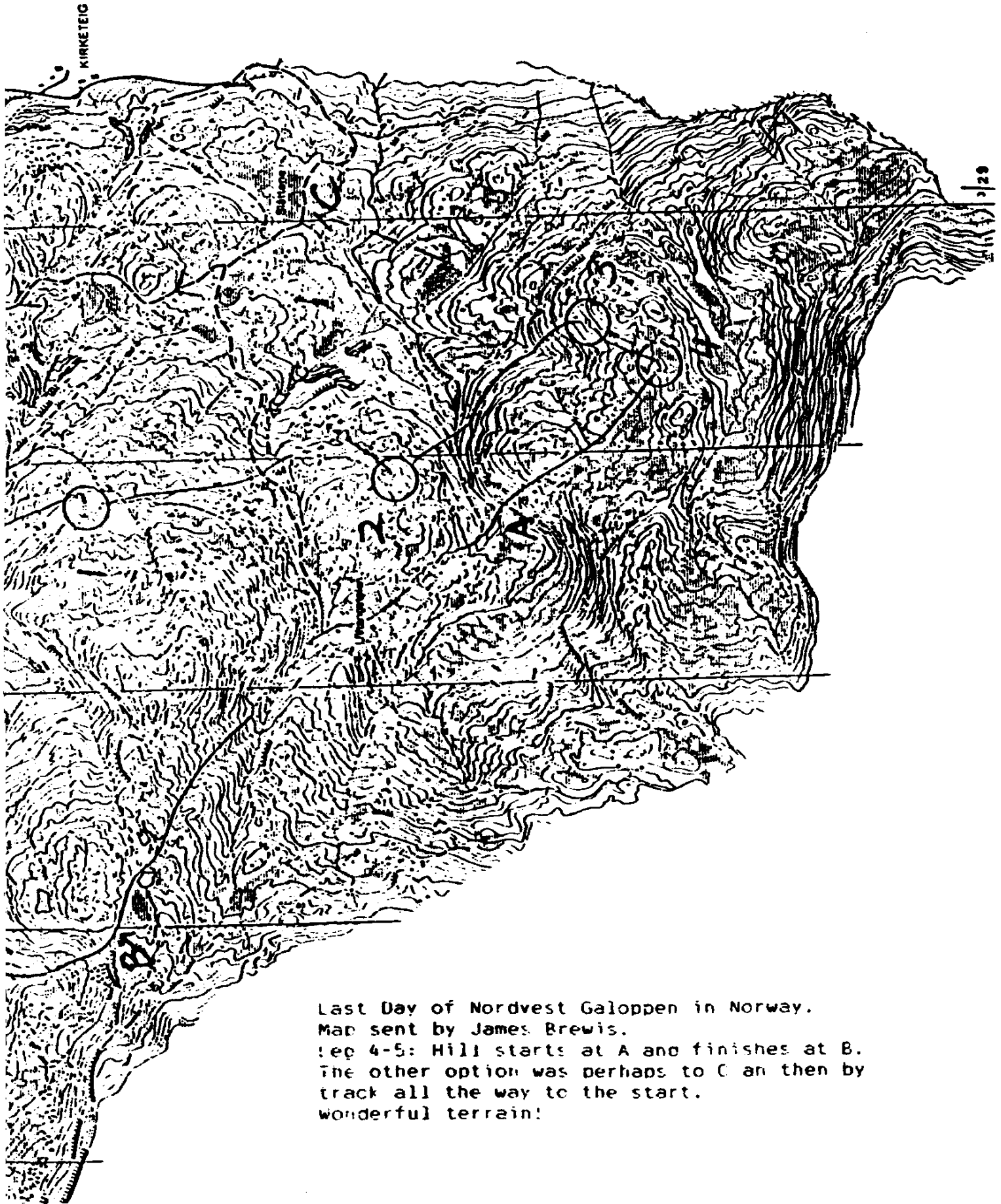
People, eg the Stones,
are slipping!!

orienteringskart

KRÅKENSMARKA

UTGJEVE AV FØRDE IORETTSLAG 1988





Last Day of Nordvest Galoppen in Norway.
Map sent by James Brewis.
Leg 4-5: Hill starts at A and finishes at B.
The other option was perhaps to C and then by
track all the way to the start.
wonderful terrain!

AUCKLAND ORIENTEERING ASSOCIATION

1991 CHAMPIONSHIPS

The North West Orienteering Club invites all orienteers to a weekend of orienteering. Saturday features 2 Short-O's in fast, flat sand dunes. On Sunday the AOA Individual Championships Badge event is in undulating forest with variable runnability.

There is also an "Orienteer of the Weekend" competition, combining the results of all three events.

SHORT O EVENT

DATE Saturday 12 October 1991
MAP Otakanini Topu . Scale 1: 10,000 2.5m contours
LOCATION Woodhill Forest. 60 minutes N.W. of Auckland
TERRAIN Forested sand dunes. Runnability : Fast
SETTER/CONTROLLER: Mike Beveridge , Geoff Mead
FIRST STARTS (a) 11.00 a.m. (b) 1.00 p.m.

GRADES	COURSE	GRADES	DURATION
	1	M21E, M35A	2 x 25 min Hard
	2	M21A, M19A, M40A, W21E	2 x 25 min Hard
	3	M17A, M45A, M50A, W21A, W35A, W19A	2 x 25 min Hard
	4	M55A, M60A, W17A, W40A, W45A	2 x 25 min Hard
	5	M65A, W50A, W55A	2 x 20 min Hard
	6	M15A, M21B, M35B, M40B, W15A, W21B W35B, W60A , M50B, W40B	2 x 20 min Medium
	7	M13A, M21C, W12A, W17-20B, M17-20B W13A, W21C, M12A, M13-16B, W13-16B	2 x 20 min Easy
	8	M12B, W12B, Kiwisport	2 x 15 min Very Easy

EVENT FORMAT : Each competitor will be supplied with one map. Courses will be self-marked in race time. The same map will be used for a.m. and p.m. events.

The aggregated times of the two events will be used in the calculation of placings for the day. Certificates will be presented on Sunday for winners and place-getters.

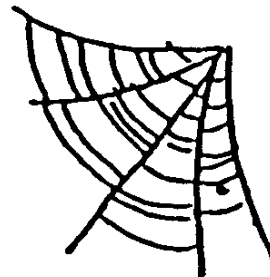
A.O.A. INDIVIDUAL CHAMPIONSHIP - BADGE EVENT

DATE Sunday 13 October 91
MAP Waterfalls , used once Easter 1990 SCALE 1: 10,000 5m Contours
LOCATION 50 Minutes North of Auckland , adjacent to S.Hway 1
TERRAIN Forested, moderately steep gully/spur terrain. Runnability : variable
SETTER Bob Murphy CONTROLLER : Bas Cuthbert
START TIMES 10 a.m.- Noon. Courses close 2.00 p.m.

The map will be pre-marked.

COURSE	GRADES	ESTIMATED WINNING TIME	
1	M21E	80 min	Hard
2	M19A, M21A, M35A	70 "	Hard
3	M40A, W21E	65 "	Hard
4	M17A, M45A	60 "	Hard
5	M50A, W19A, W21A, W35A	60 "	Hard
6	M55A, W17A, W40A	55 "	Hard
7	M60A, W45A	50 "	Hard
8	M65A, W50A, W55A	45 "	Hard
9	M15A, M21B, M35B	50 min	Med
10	M40B, W15A, W21B, W35B, W60A	45 "	Med
11	M13A, M17-20B, M21C M50B, W13A, W17-20B W21C, W40B	40 "	Easy
12	M12A, M13-16B, W12A W13-16B	30 "	Easy
13	M12B, W12B, Kiwisport	25 "	Very Easy

FROM THE ARCHIVES



August 1981. A training day in Waiuku Forest on a map which is now mostly Glenbrook Mines, a re-run of some OY courses on the Waiuku South map and an OY on Claypit Rd map organised by Geof Bendall and Wallace Bottemley. Again some names are still prominent. No guesses as to what Gordon and Jill Evans, Bec and Lyndsay Shuker, Wayne and Trish Aspin, Ann and John Fettes or Terge and Mary Moen have been talking about over the past ten years.

The SA club magazine had an article by W100 and an organiser complained that clip cards were not filled in correctly so this facet of orienteering hasn't changed. Noted that two juniors Jenni Martin DNF's in a wayfarers course and that Tania Robinson was sixth (and last) in the W12 event. Oh dear! John and Val won their grades.

From Ken Browne

FOREST RUN

BIGGER AND BETTER FOREST RUN - AND MORE MONEY TOO

This year's Gib Board Forest Run, held at Woodhill Forest in May, was the biggest and best yet. Well, that's according to some of the non-orienteers taking part.

There were more prizes, the event ran smoothly and parking was more accessible. Held in the Rimmer Road section of Woodhill, the runs of 5 Kms and 10 Kms together attracted about 2000 entries.

This was the eleventh Forest Run to be sponsored by Winstone's Gib Board and it raised \$10,500 towards sending our squad to the next World Champs. Thanks Gib Board, Smith's Sports Shoes, Carter Holt Harvey and all the other sponsors

LIFT OFFERED

COOA INDIVIDUAL AND SHORT O CHAMPS SAT 17/SUN 18 AUGUST-ROTORUA
STAN FOSTER WILL GIVE 4-5 PEOPLE A LIFT DOWN TO CHAMPS.
WILL LEAVE AUCKLAND SATURDAY MORNING AND RETURN SUNDAY AFTERNOON
PLEASE PHONE STAN FOR DETAILS PH 416-7106

WOODCOCKS

The (previous ?) editor a few months ago bemoaned the lack of event reports. I was tempted to write a piece about OY2 at Pollok, especially about discussing route choice with Alister Landels afterwards. That went something like this:

RC- "How did you go on this leg? I contoured around the hill to the left, followed the stream into the control."

AL- "I went straight."

RC- "Well, how about this leg? I veered to the left, under this hill, waded the stream, climbed, wandered around the ridge and abseiled down the cliff."

AL- "I went straight."

Thus the secret of M21E was learned. Get yourself as fit as you can 'cause the shortest way between two points is straight, no matter whats in between.

But I digress. Event reports is what the editor wanted, and that is what she (or now he?) shall have. The event to bear the brunt of my pen is Woodcocks, that quaint little map out of Warkworth. Having never been there, I was lulled into a false sense of security on the drive 'in from SH1'. You know, you turn off and we confronted by river flats and gentle rolling hills (ah, a nice easy run today), but when you park your car and stare straight ahead and see two humingous forest covered hills split by the railway, you start looking around for Sir Ed and his oxygen bottle.

Your humour is not improved by seeing one red banner fluttering in the breeze what seems like kilometers away. Upon ascertaining that this is the finish, you enquire as to the proximity of the start, and get reorientated to the left to see another red banner fluttering in the breeze, what also seems like kilometers away.

Oh well, make the most of it. Jog to start (mistake) and discover that this must be the only place in NZ which hasn't had any sun this week. To say the ground was boggy would be a little understatement.

Orienteering seems to have enough negative etchings through this newsletter - consequently, this event report will be short. Suffice to say my day was filled with:

- mud,
- a misplaced control,
- no water control,
- more mud,
- two long legs involving handrails (one a fence, the other a road) virtually all the way,
- even more mud, and the piece de resistance,
- a sadistic 270m. stretch on leg 3-4 that involved 130m. uphill with little alternative.

I got told at OY3 that Woodcocks was on a par with Mt. Auckland with respect to numbers of contour lines and closeness of same. Some people have a sick sense of humour. I'm further told that Waterfalls is steeper than Woodcocks. Here's one orienteer who needs convincing to attend the Auckalnd Champs this year.

I did get some enjoyment from the day. After taking a drink of water from a plastic bottle at the finish which in the words of one agriculturalist from South Auckland tasted like it had been tainted with 245-T (no joke), I went and got my camera and went down to the last control. I should have taken a tape recorder instead and replayed it to the organisers!

Believe it or not, I'm not really complaining. I know that organising an event takes a lot of time and is sometimes not well appreciated. So, through the pages of your magazine, let me thank the NORTH WEST officials who organised the day and I trust they enjoyed and perhaps learned something from the experience.

Rob Crawford

OY7 PAPAROA-WOODHILL SEPT 29th

For some time now I have dwelt upon injecting a little excitement and stimulus into the OY series. Mike Ashmore did well with his "JOKER" points but still the events seemed to lack a bit of something. When my NZ091 committee were putting the program together I put forward the short "O" to South Auckland for not only lack of suitable area and manpower, but to add a variant before the series events. From feedback it worked on the three facets admirably, thus setting my cogs into motion for a possible future stimulus. With the Veterans' Tasmanian festival blowing its heraldic trumpet for January, perhaps the OY final would be a beaut if two short "O"s with an aggregated time for OY points, would certainly enhance the finale and perk the fast map-reading, fast decisions needed for international expertise, also. Start times for both halves would have been published, and the lunch intermission under a huge tarpaulin of 1 1/2 hours+ was sure to have filled in for much of the social chatty atmosphere, absent from the majority of events I've been to since the early eighties.

Alas, you enthusiastic supporters I have quizzed, will have to suffer yet. A.O.A. rules for the type of events for the OY's were set at the start of the year, and worst I fear, a clutch of dissenters, mainly North Harbourish, have expressed concern at not being ready at short notice for such a physical and mental upheaval. Here I was all this time thinking. Orienteers were the epitome of creatures suited to adaption.

As I have excused myself from course setting in 1992, (my first "free" year since 1972) perhaps another crusader could ensue this entrepreneurial fetiche.

Meanwhile OY& course will be

C1	9.50Km	W/T 65min	M21E.
C2	6.45Km	W/T 55min	M21A. M35A. W21E.
C3	5.80Km	W/T 50min	M17A. M19A. M40A. M45A.
C4	5.30Km	W/T 45min	M15A. M21B. M50A. W21A. W35A.
C5	4.60Km	W/T 45min	M35B. M40B. M55A. W17A. W19A. W40A. W45A.
C6	4.00Km	W/T 45min	M45B. M60A. M56A. W15A. W21B.
C7	3.34Km	W/T 40min	W35B. W40B. W45B. W50A. W55A. W60A.
C8	2.88Km	W/T 35min	M13A. MNL. WNL.
C9	3.30Km	W/T 35min	M11A. MNS. W11A. W13A. WNS.
C10	1.80Km	W/T 25min	M10. W10.

Muster and parking area same as the NZ091 challenge.

Tony Nicholls

AOA UNDER 21 TEAM TO THE CDOA CHAMPS AUGUST 1991

W13A Ineke Currie
Charlotte Hood
Rachel Shuker

M15A Peter Ambler
Richard Bolt
Daniel Stevens
Reserve Tony Tremain

W15A Marit Moen

M17A Bryce Brighthouse+
David O'Brien
Chris Ambler

W17A Kirsten Ambler
Joanne Henderson
Sasha Middleton
Reserve Brenda Stone*

Reserve Brett Ashmore+

M19A Christer Abrahamsson
Toby Carter
Phillip Goss

W19A Alison Stone*
Barbara Batty+

* Unavailable for the CDOA champs

+ Awaiting confirmation

Please complete the registration form and return by August 15 to:

A.Fettes, 17 Cutler St, New Lynn (Ph.875-358)

REGISTRATION FORM

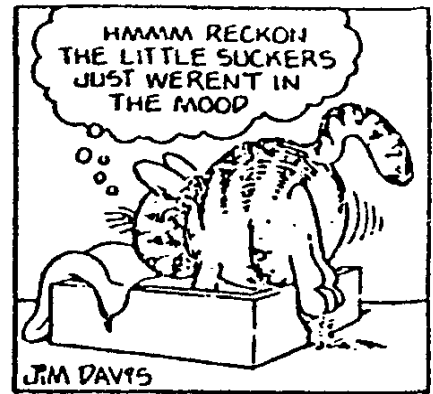
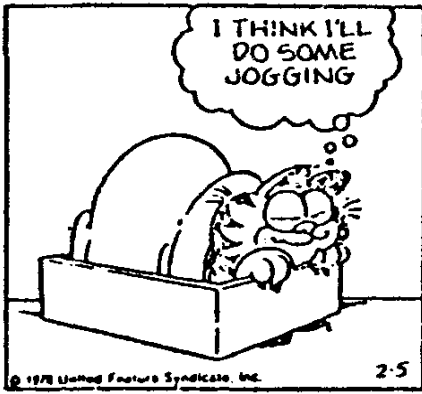
TRAINING CAMP, AMHITU, AUGUST 31 10.30am

This camp is open to all juniors and youth team members plus a few parents.

Cost: 1 nights accommodation and meals - \$10, payable on the day

The usual map charges will apply on Sunday.

NAME _____ GRADE _____ PHONE _____
NAME _____ GRADE _____
NAME _____ GRADE _____
NAME _____ GRADE _____
NAME _____ GRADE _____



STOP
PRESS
NZ CHAMPS
ENTRY FORMS
INSIDE

Auckland Orienteer
Editor:
Mervyn Paitry
16 Korma Rd.
Mt Roskill,
AK 4.

POSTAGE PAID
Permit No. 23
Browns Bay